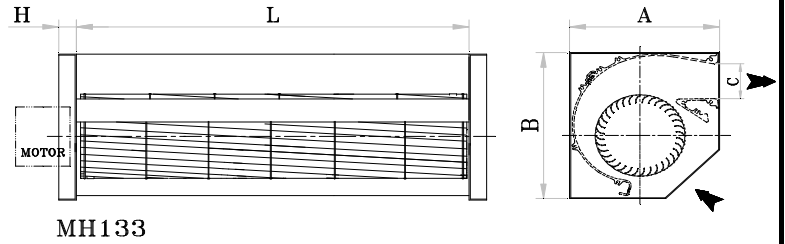
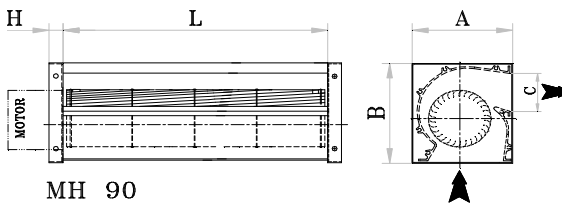
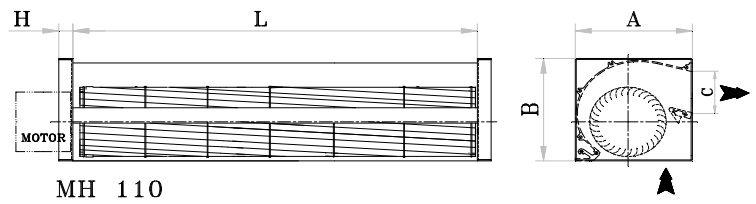
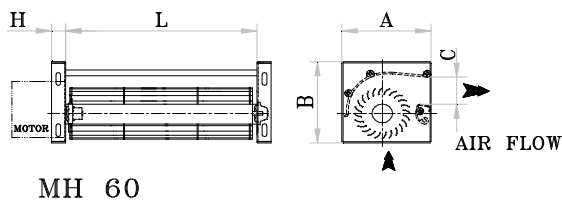


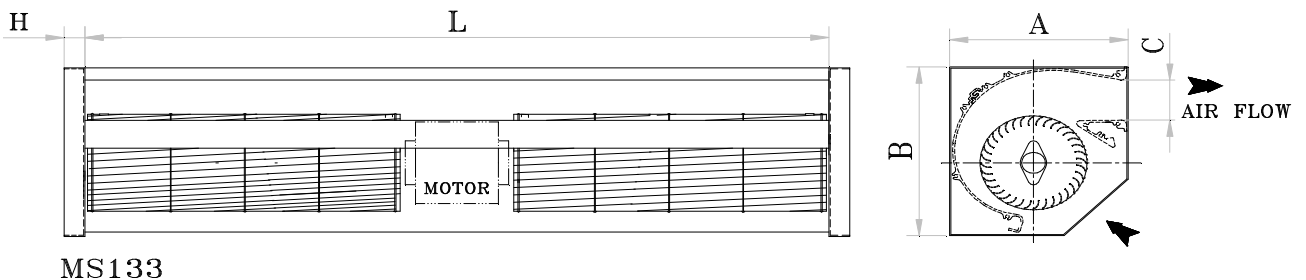
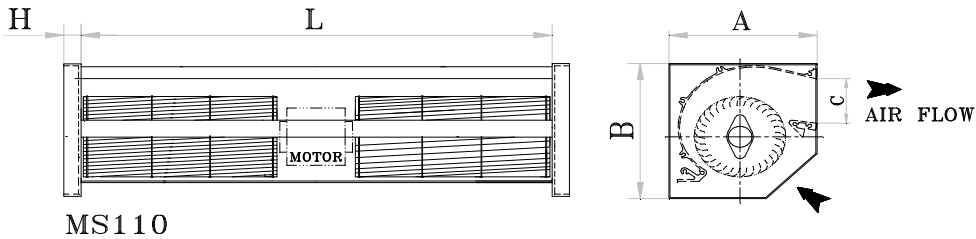


CROSSFLOW BLOWER HOUSINGS

HOUSING TYPE	Impeller	L		A		B		H	C
		Inchs	mm	Inchs	mm	Inchs	mm		
MH 60	CF 60	4.33 - 22.36"	110 - 568	3.74" - 95	95	3.74" - 95	95	0.59"-15mm	1.26"-32mm
	CF 65	4.33 - 22.36"	110 - 568						
MH 90	CF 81	8.25 - 24.00"	210 - 610	5.67" - 144	144	6.22" - 158	158	0.79"-20mm	2.36"-60mm
	CF 90	8.25 - 36.80"	210 - 935						
MH 110	CF 100	12.20 - 39.76"	310 - 1010	6.61" - 168	168	6.38" - 162	162	0.79"-20mm	2.56"-65mm
	CF 110								
MH 133	CF 133	12.40 - 40.0"	315 - 1016	8.46" - 215	215	9.10" - 231	231	0.98"-25mm	2.16"-55mm



HOUSING TYPE	Impeller	L		A		B		H	C
		Inchs	mm	Inchs	mm	Inchs	mm		
MS 110	CF 110	36 - 72" Max	915 - 1830 Max	7.00" - 179	179	7.28" - 185	185	0.98"-25mm	2.56"-65mm
MS 133	CF 133	36 - 72" Max	915 - 1830 Max	8.46" - 215	215	9.10" - 231	231	0.98"-25mm	2.16"-55mm



MATERIAL: SIDES WALLS - GALVANIZED STEEL, SCROLL BACK - ALUMINUM